

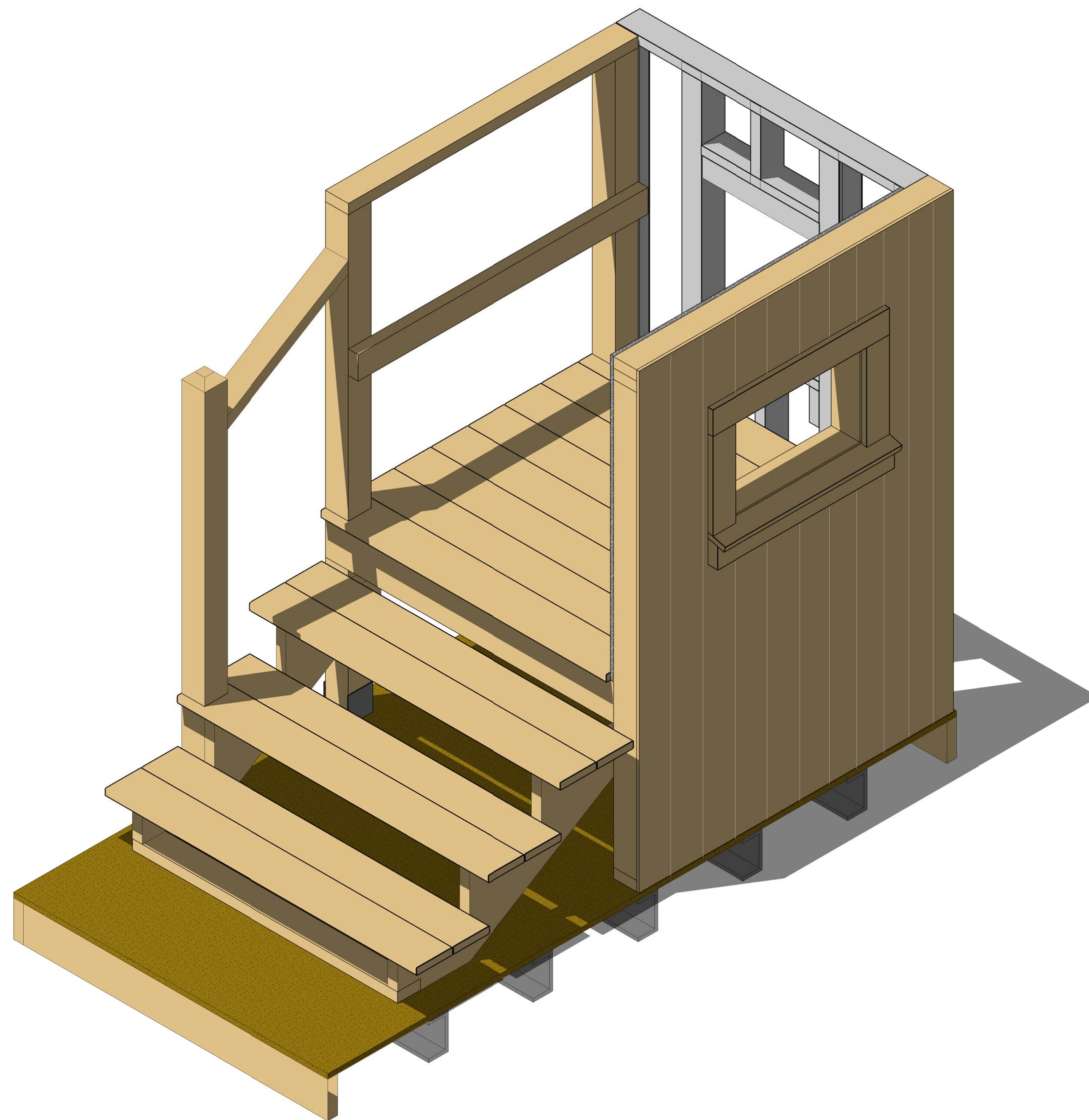
# **SkillsUSA 2012 Contest Projects**

## **Carpentry**

Click the “Print this Section” button above to automatically print the specifications for this contest. Make sure your printer is turned on before pressing the button.



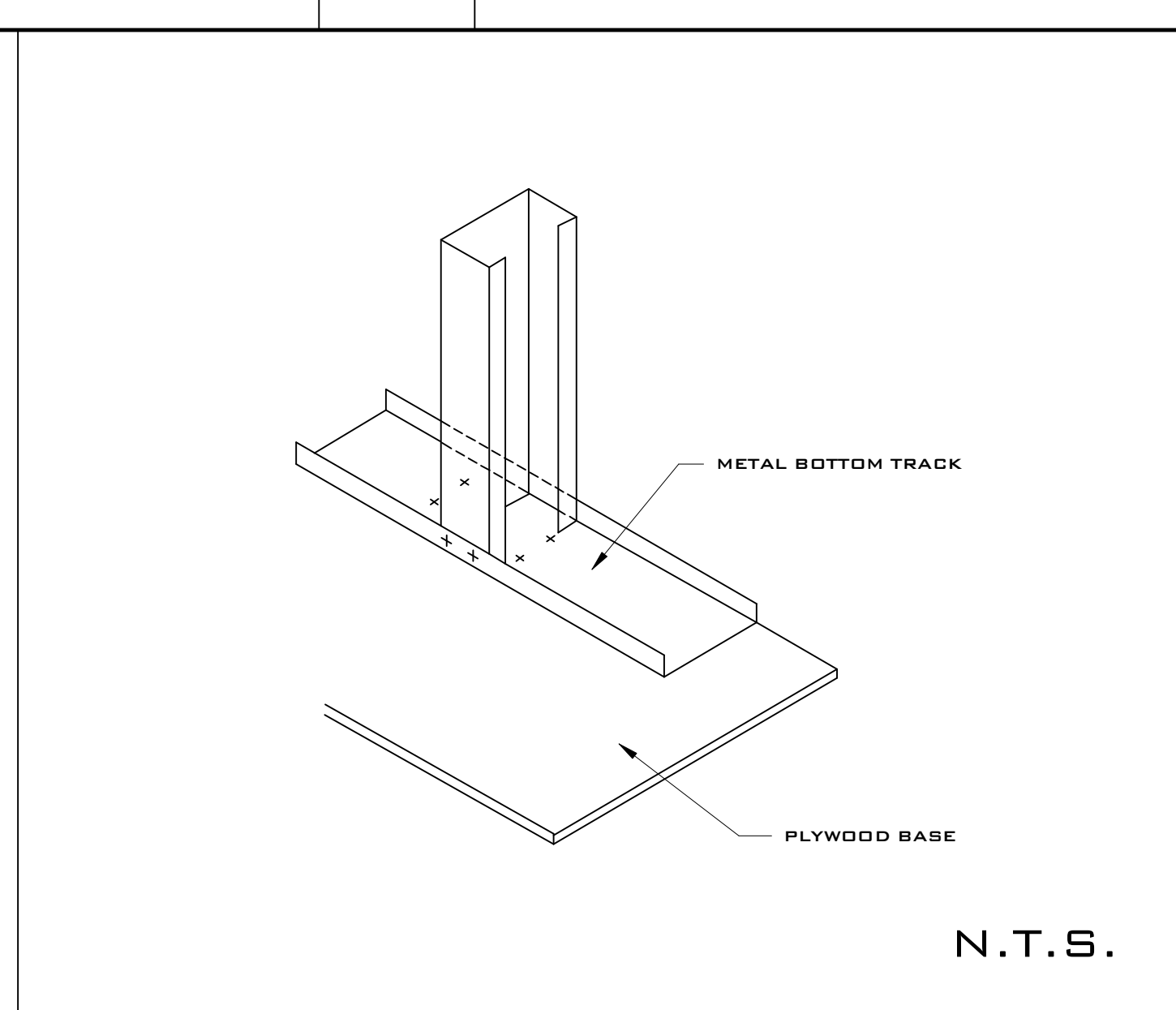
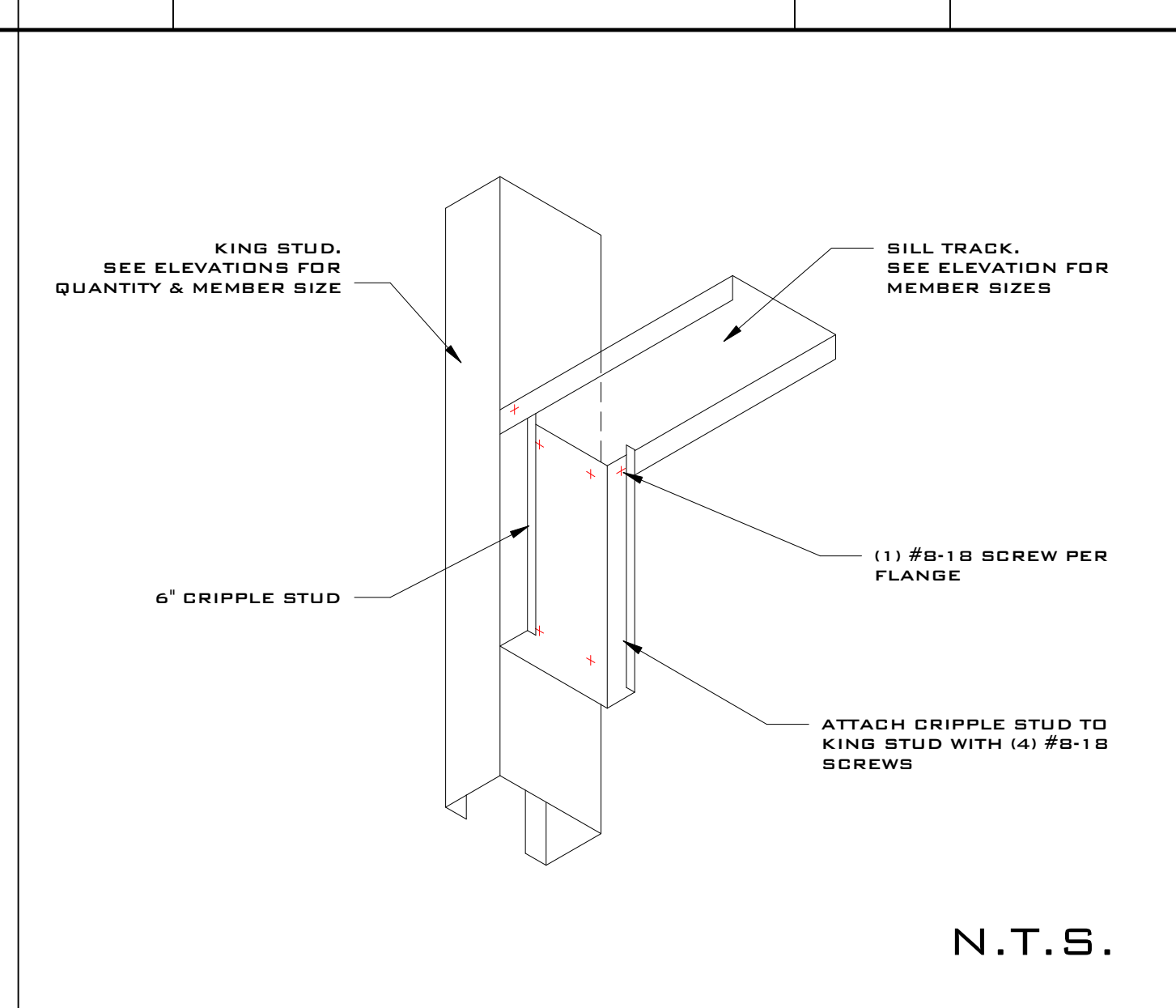
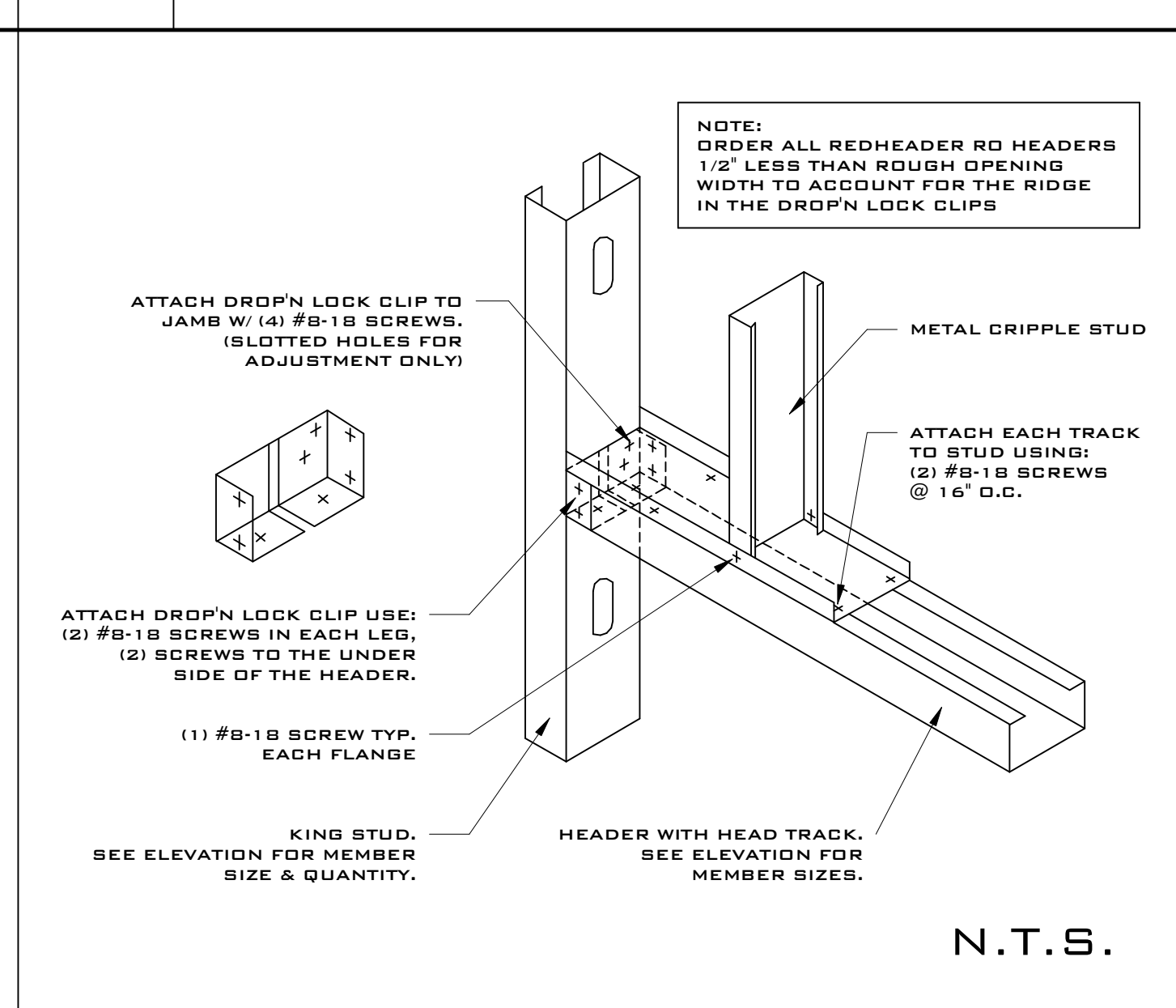
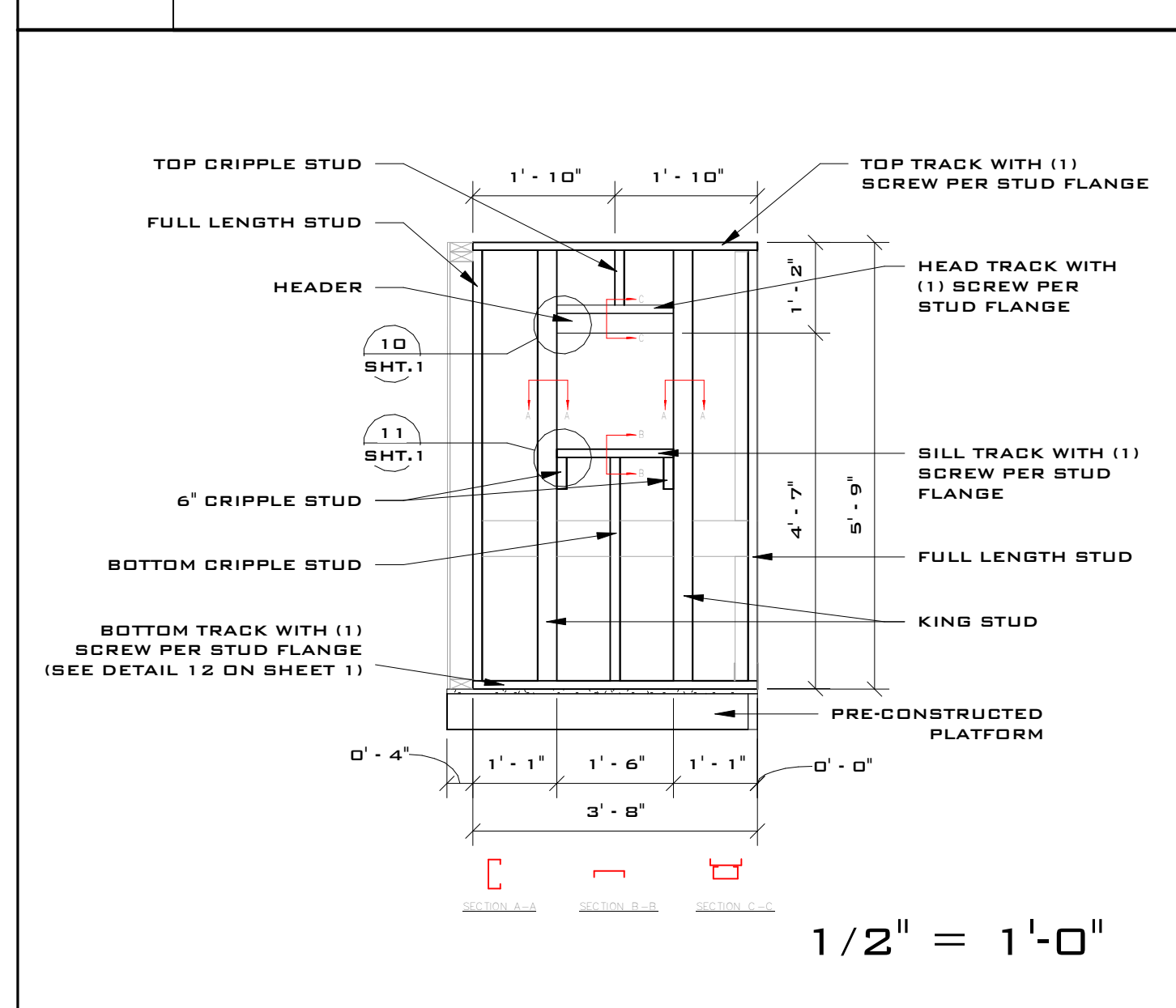
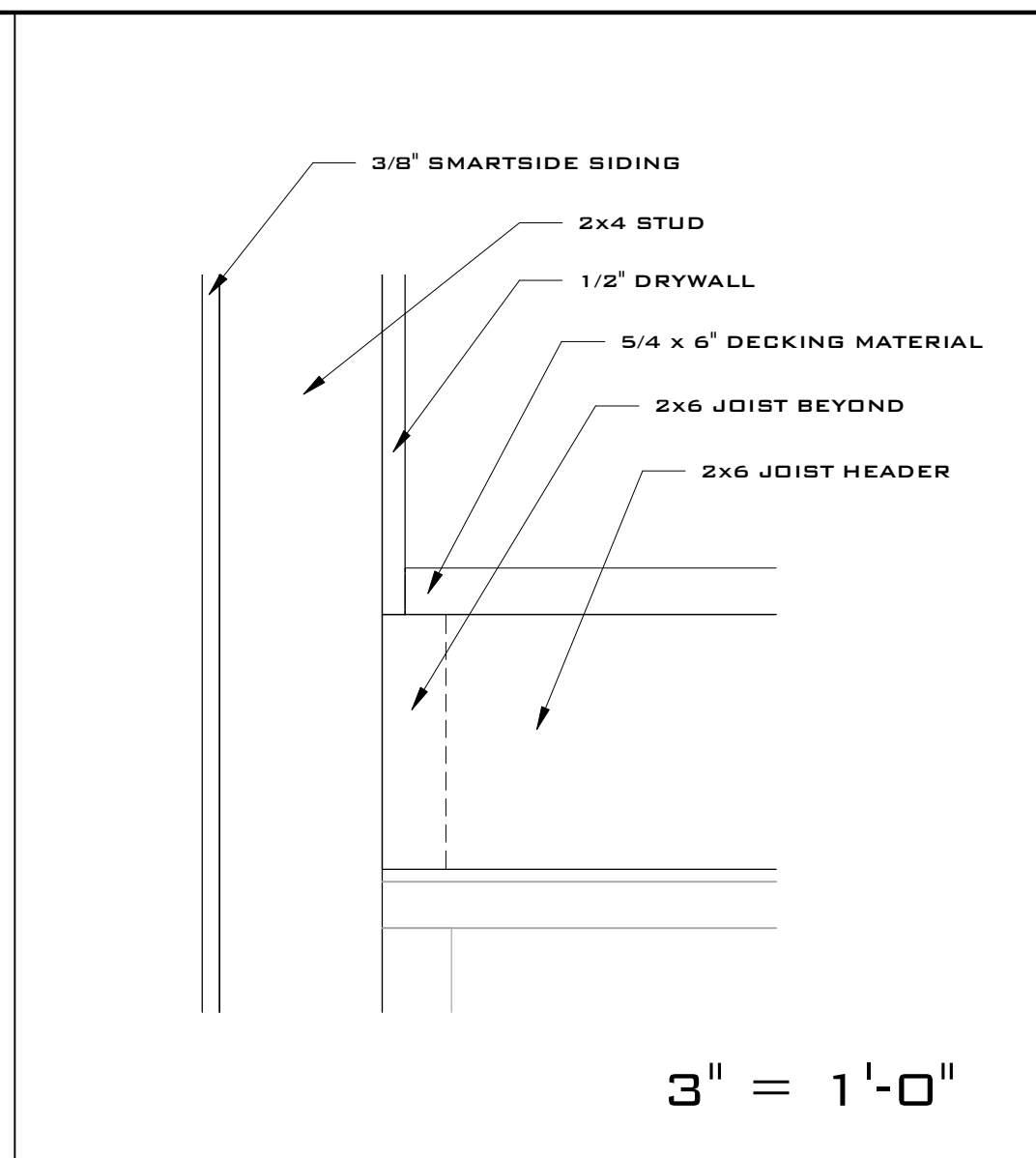
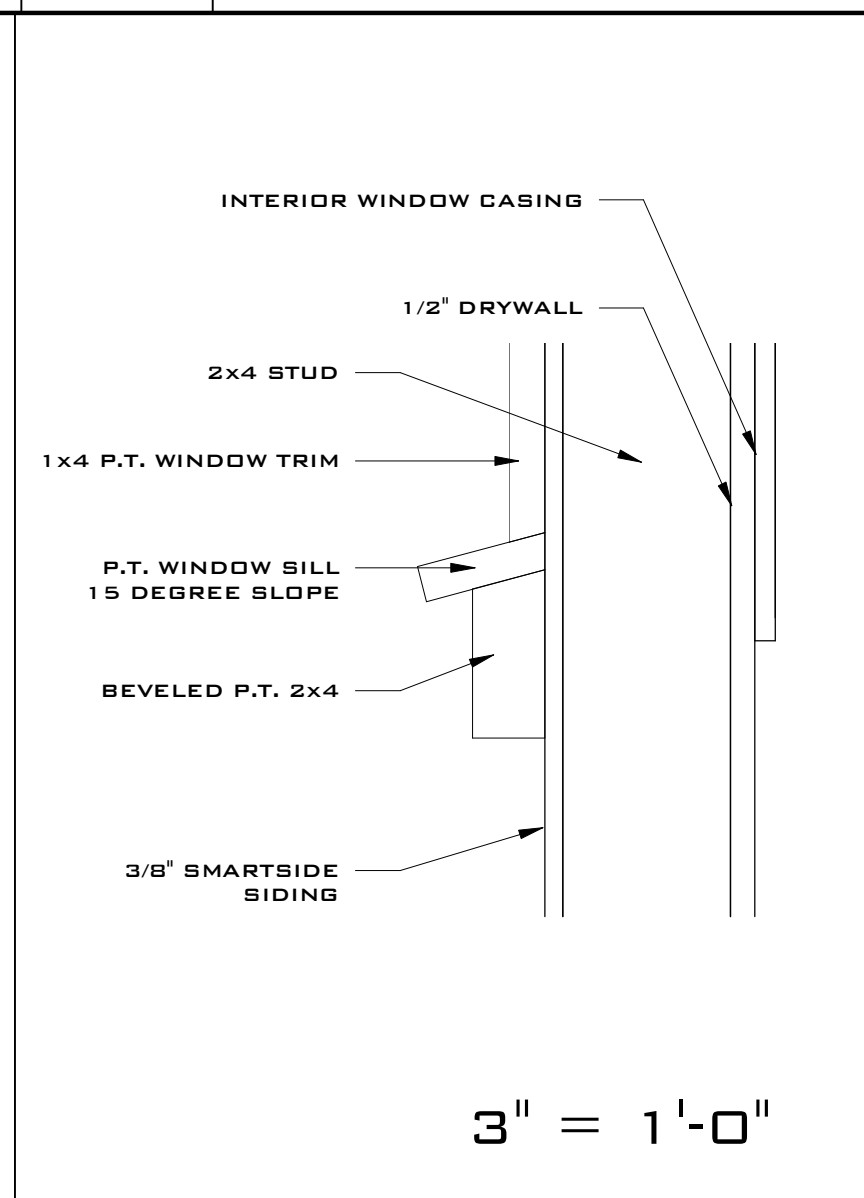
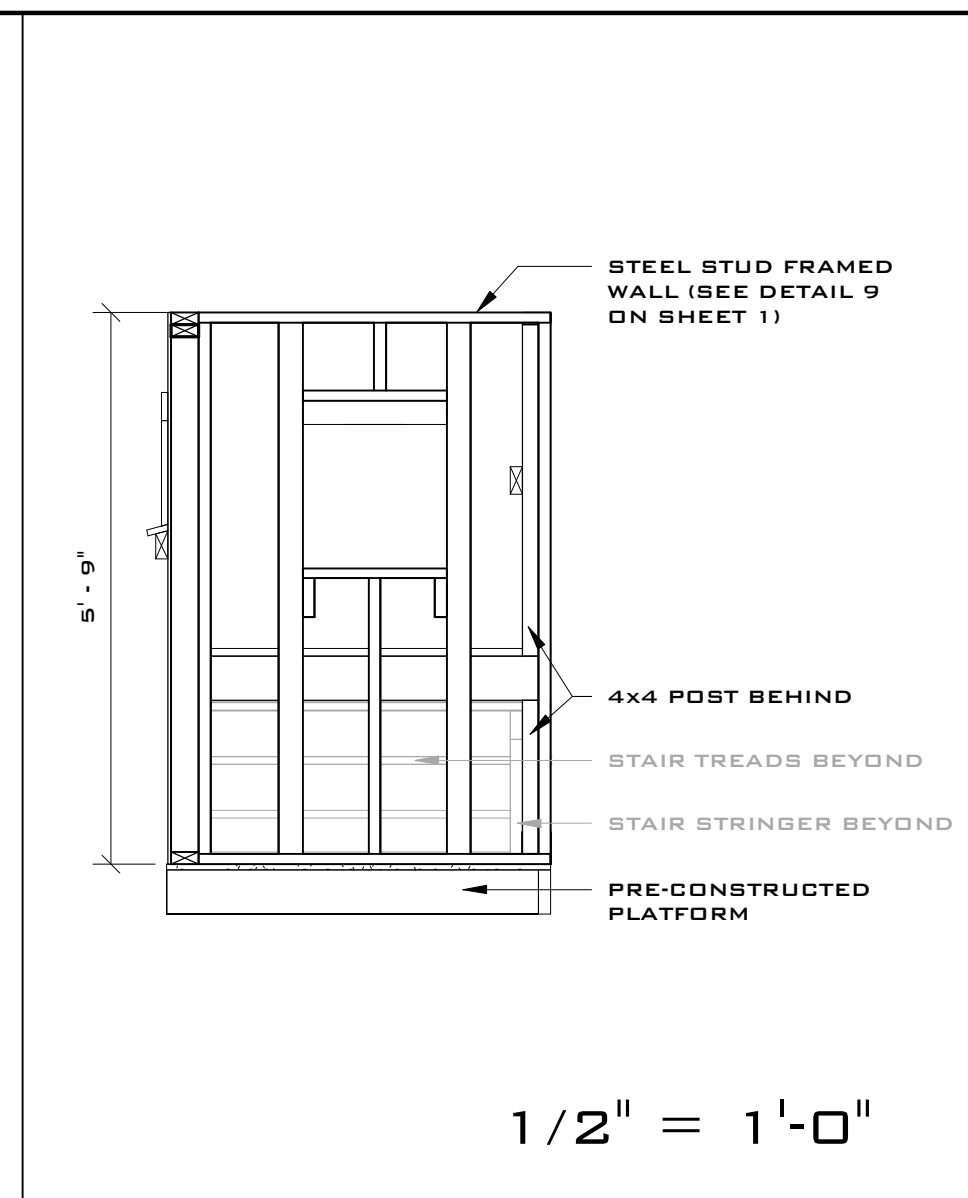
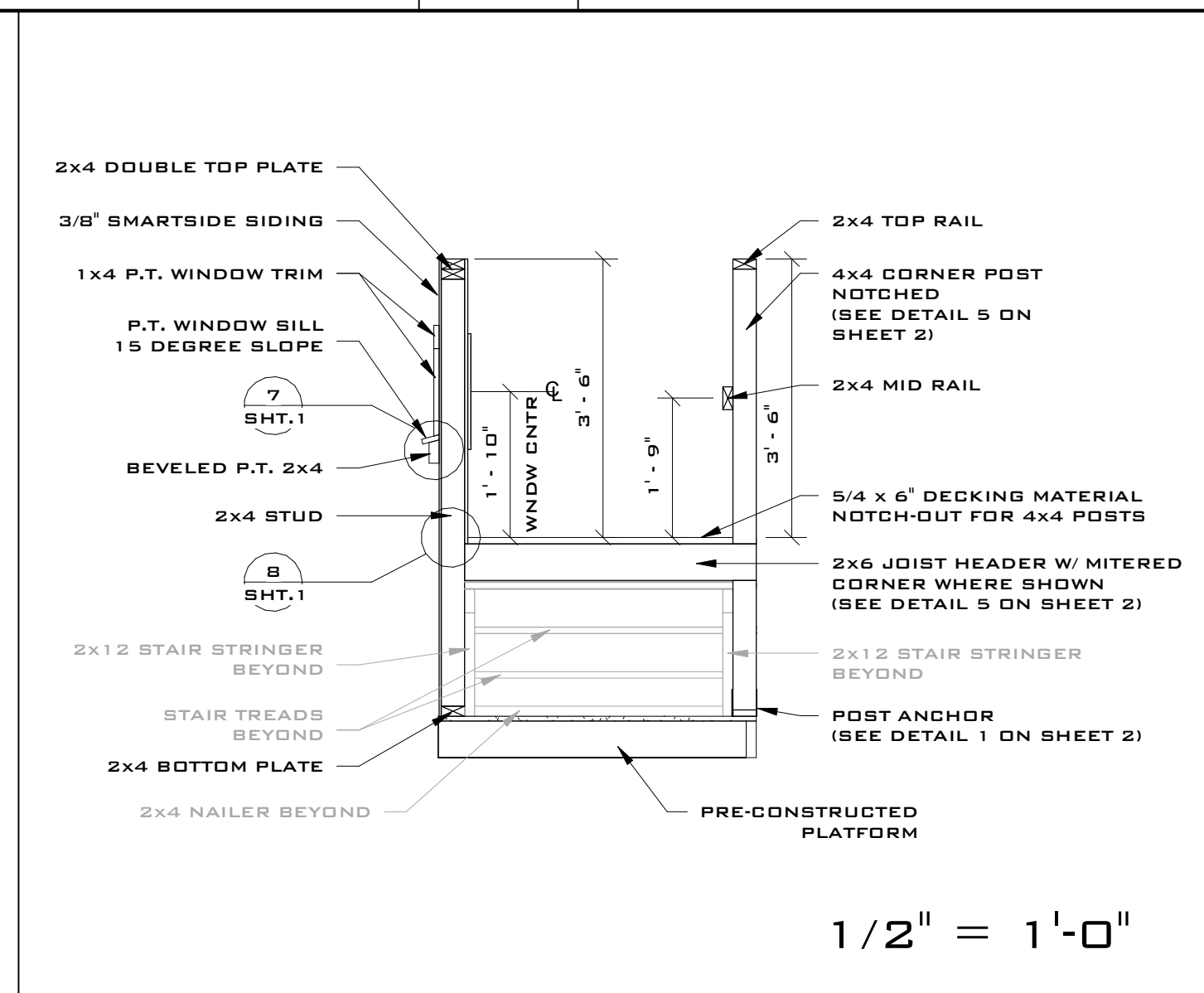
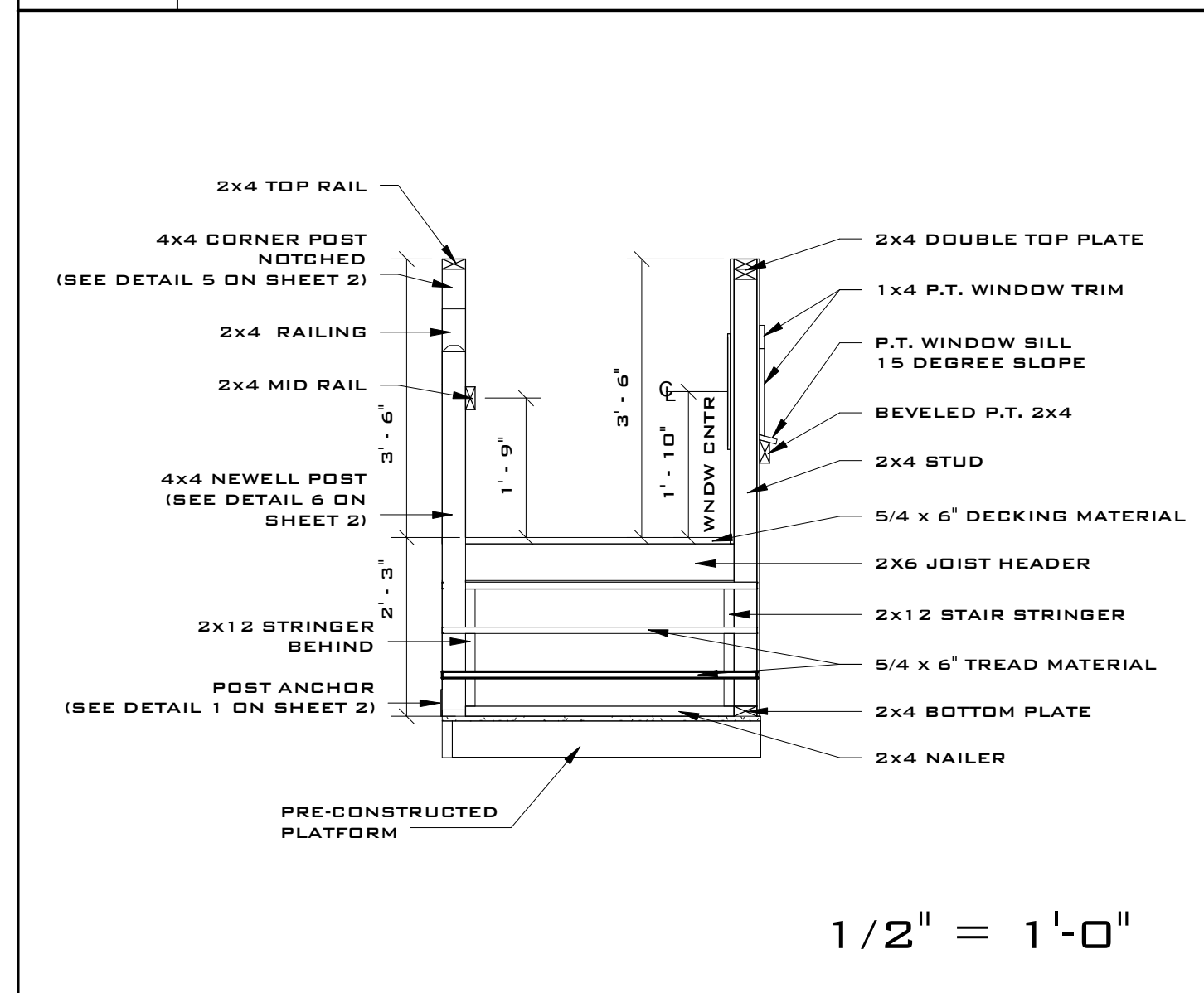
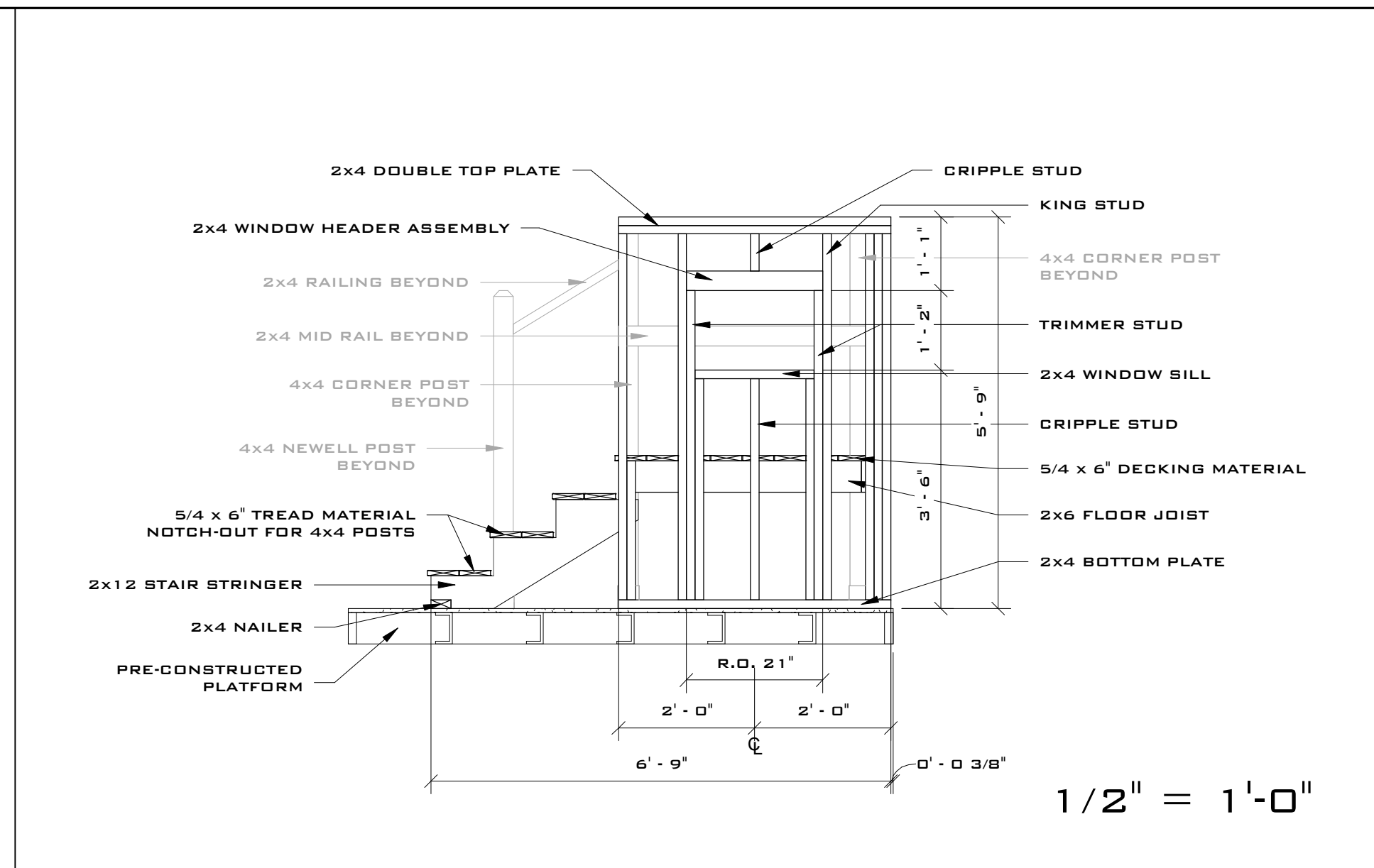
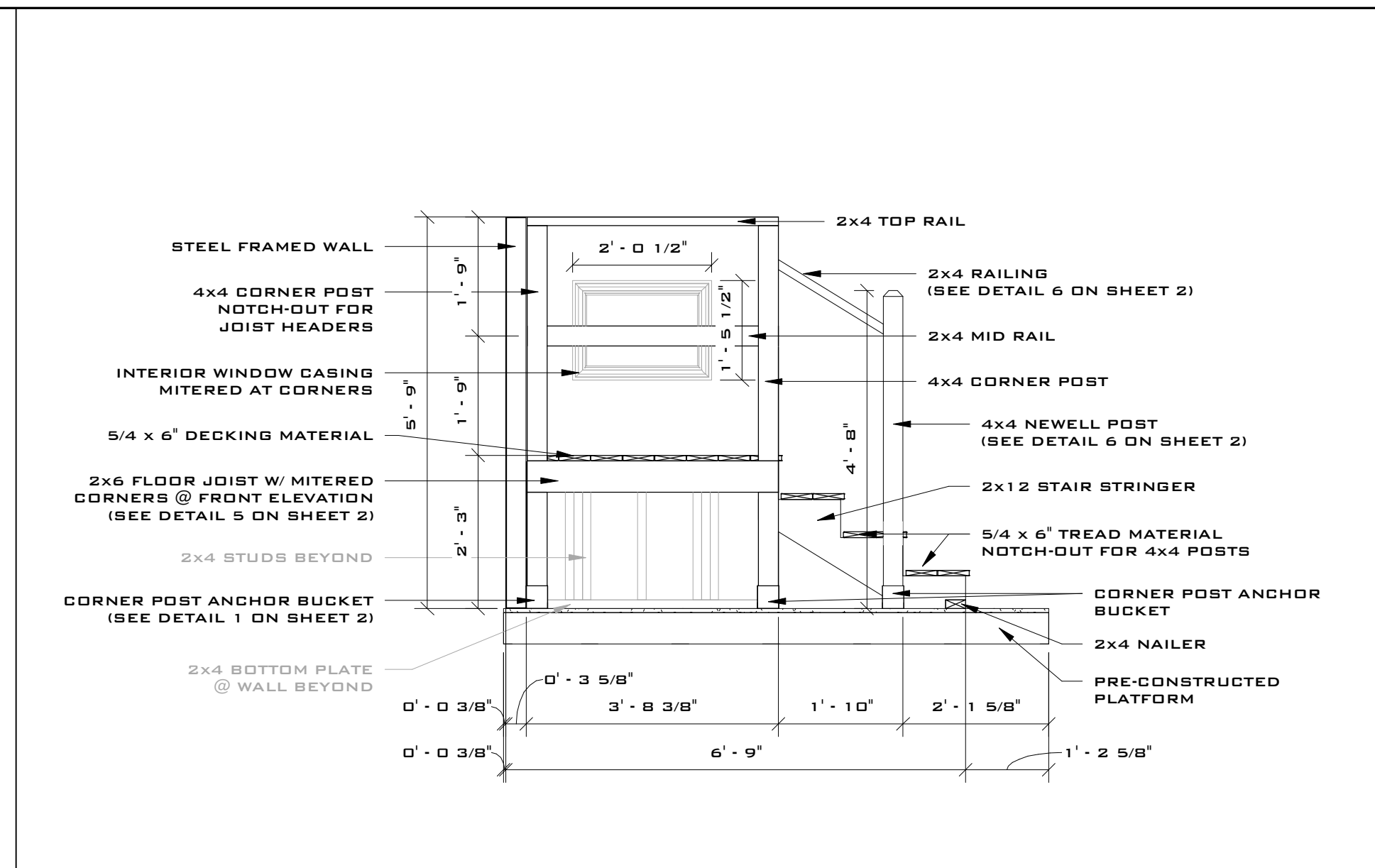
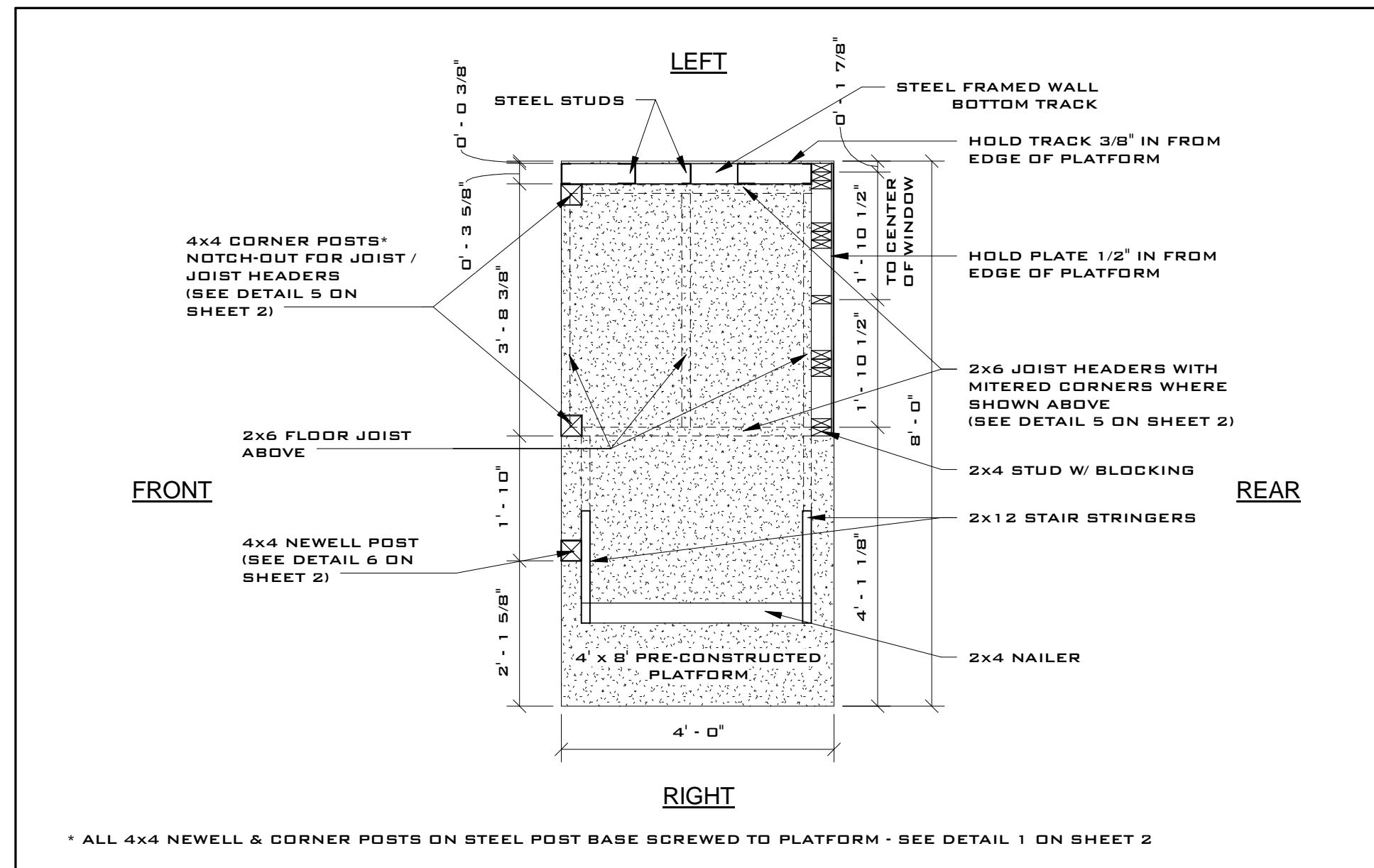
# 48TH ANNUAL SKILLSUSA 2012 CARPENTRY CHAMPIONSHIPS



METAL FRAMING MATERIALS			
QTY	DESCRIPTION	MATERIAL	LENGTH
1	BOTTOM TRACK	362PDT125-19 (50ksi)	3'-8"
1	TOP TRACK	362PDT125-19 (50ksi)	3'-8"
2	FULL-LENGTH STUD	362PDS125-19 (65ksi)	5'-8 7/8"
1	BOTTOM CRIPPLE STUD	362PDS125-19 (65ksi)	3'-0 7/8"
1	TOP CRIPPLE STUD	362PDS125-19 (65ksi)	0'-10 7/8"
2	6" CRIPPLE STUD	362PDS125-19 (65ksi)	0'-6"
2	KING STUD	362JS300-33 (33ksi)	5'-8 7/8"
1	HEAD TRACK (OPENING)	362PDT125-19 (50ksi)	1'-5 3/4"
1	SILL TRACK (OPENING)	362PDT125-19 (50ksi)	1'-5 3/4"
1	HEADER	350HS300-33 (33ksi)	1'-5 1/2"
2	DROP 'N LOCK CLIP	DROP 'N LOCK CLIP 362-33	---

WOOD FRAMING MATERIALS	
QTY	DESCRIPTION
14	2"x4"x8' FRAMING
3	2"x4"x10' SAW HORSES*
7	5/4"x6"x8' DECKING
1	2"x6"x12' JOIST
1	2"x6"x10' JOIST
1	4"x4"x5' POST
1	4"x4"x12' POST
1	2"x12"x10' STAIR STRINGER
1	1"x4"x6' EXT. WINDOW CASING
1	1"x4-1/2"x8' WINDOW JAMB
1	2"x4"x30" W/15 DEGREE BEVEL EXT. SILL
1	1"x2-3/4"x30" W/15 DEGREE BEVEL WINDOW SILL
1	3-1/2"x1/2"x48" FILLER STRIP
1	3/8"x4"x8' SIDING
1	1/2"x4"x4' INT. WALL BOARD
1	2-1/4"x11/16"x8' INT. WINDOW CASING

\* SAW HORSES REQUIRE ADDITIONAL PIECE CUT FROM WALL FRAMING



**9 METAL WALL FRAMING ELEVATION**  $1/2'' = 1'-0''$

**10 METAL WALL JAMB CONNECTION** N.T.S.

**11 METAL SILL TRACK CONNECTION** N.T.S.

**12 METAL WALL JAMB ANCHORAGE** N.T.S.

